

Flower Jet



Description - Produces a single ring of fine jets of water flowing outwards from a central nozzle.

Sizes - Available from 25mm to 50mm inlets with no of outlets varying from 12 to 36

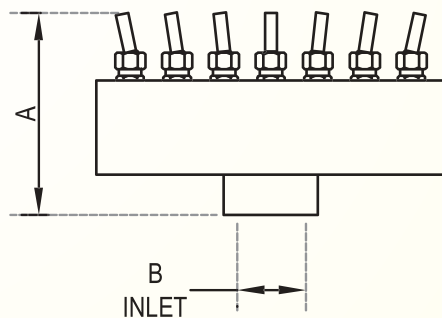
MOC - Cast Bronze & Machined Brass.

Custom - No of outlets on the nozzle can be customized.

Type - Water level independent (no change in water effect with varying water level)

Dimensions

SAP Code	MODEL	A	Inlet (B)
NOZ14.01	Flower Jet 25/12	140mm	25mm
NOZ14.02	Flower Jet 32/24	140mm	32mm
NOZ14.03	Flower Jet 50/36	140mm	50mm



Flow Rate for Flower Jet

MODEL	Flower Jet 25/12	Flower Jet 32/24	Flower Jet 50/36
Spray Ht.(in m)	LPM	LPM	LPM
1.00	48	96	144
1.50	54	108	162
2.00	60	120	180
3.00	72	144	216
4.00	84	168	252
6.00	108	216	324