

Floor Flush Jet

Description - Designed to be used on pool decks or on kids play areas as a walk-over nozzle. Produces a single ring of fine jets flowing outward either all around or in a particular area.

Sizes - Available with 25mm or 50mm inlets

MOC - Cast Bronze

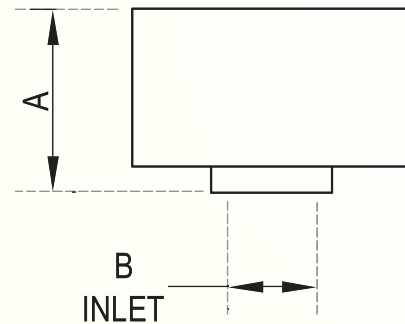
Custom - The angle of spray and the direction can be customized.

Type - Water level dependent. The nozzle has to be installed flush with the floor and with no water on top of the nozzle.



Dimensions

SAP Code	MODEL	A	Inlet (B)
NOZ13.01	Floor Flush Jet 25/1/12	50mm	25mm
NOZ13.02	Floor Flush Jet 50/1/12	105mm	50mm



Flow Rate for Floor Flush Jet

MODEL	Floor Flush Jet 25/1/12	Floor Flush Jet 50/1/12
Spray Ht.(in m)	LPM	LPM
0.50	15	30
1.00	21	42
1.50	25	50
2.00	29	58
3.00	35	70