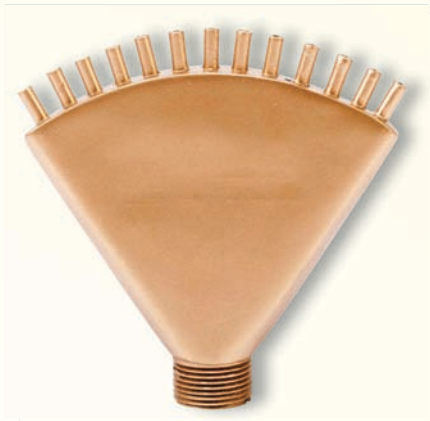


Finger Jet



Description - Finger jet nozzles produce a series of clear stream jets radiating outwards. Can be installed vertically or at an angle using two 90-degree bends.

Sizes - Available with 19mm and 25mm inlets.

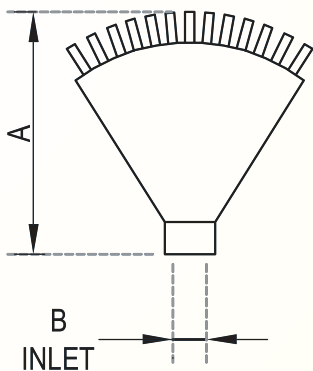
MOC - Cast Bronze body with brass or Copper jets.

Custom - The no of outlets on the jet can be customized.

Type - Water level independent (no change in water effect with varying water level)

Dimensions

SAP Code	MODEL	A	Inlet (B)
NOZ12.03	Finger Jet - 19	160mm	19mm
NOZ12.04	Finger Jet - 25	160mm	25mm



Flow Rate for Finger Jet

MODEL		Finger Jet - 19	Finger Jet - 25
Spray Ht.(in m)	Spray Width(in m)	LPM	LPM
1.00	5.00	44	52
1.20	6.00	47	56
1.50	7.00	50	59
1.80	8.00	53	62